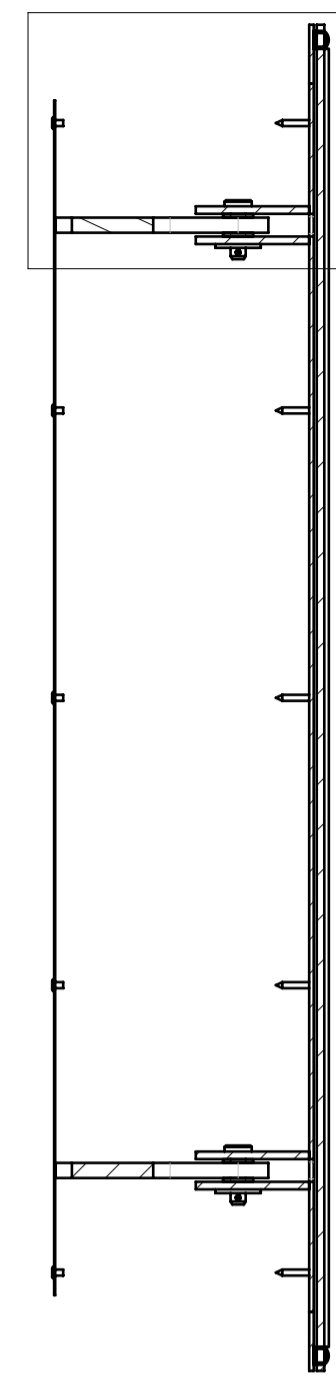
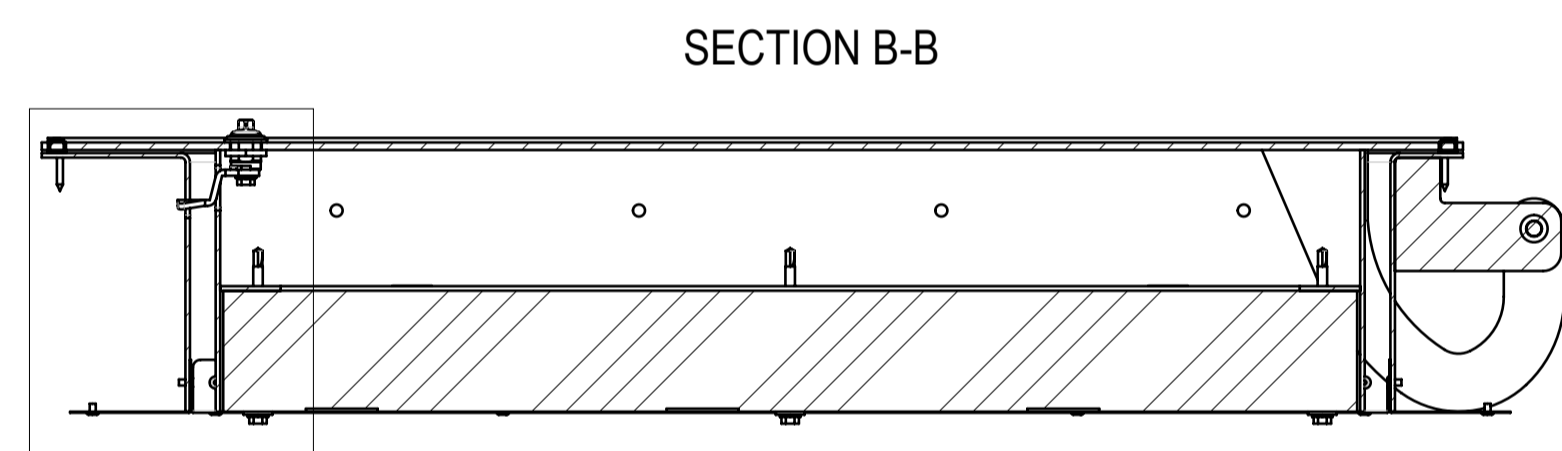
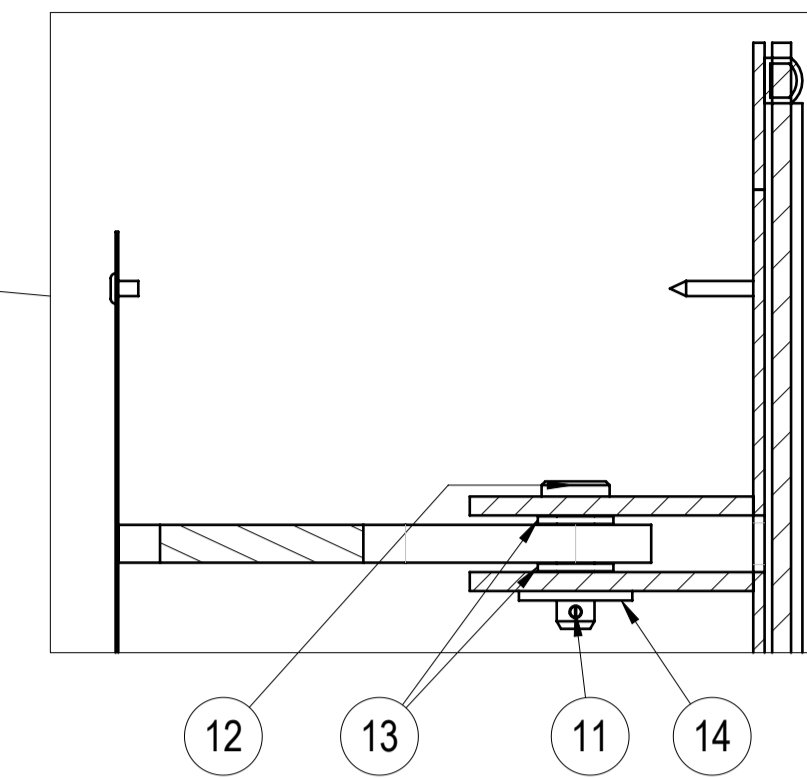


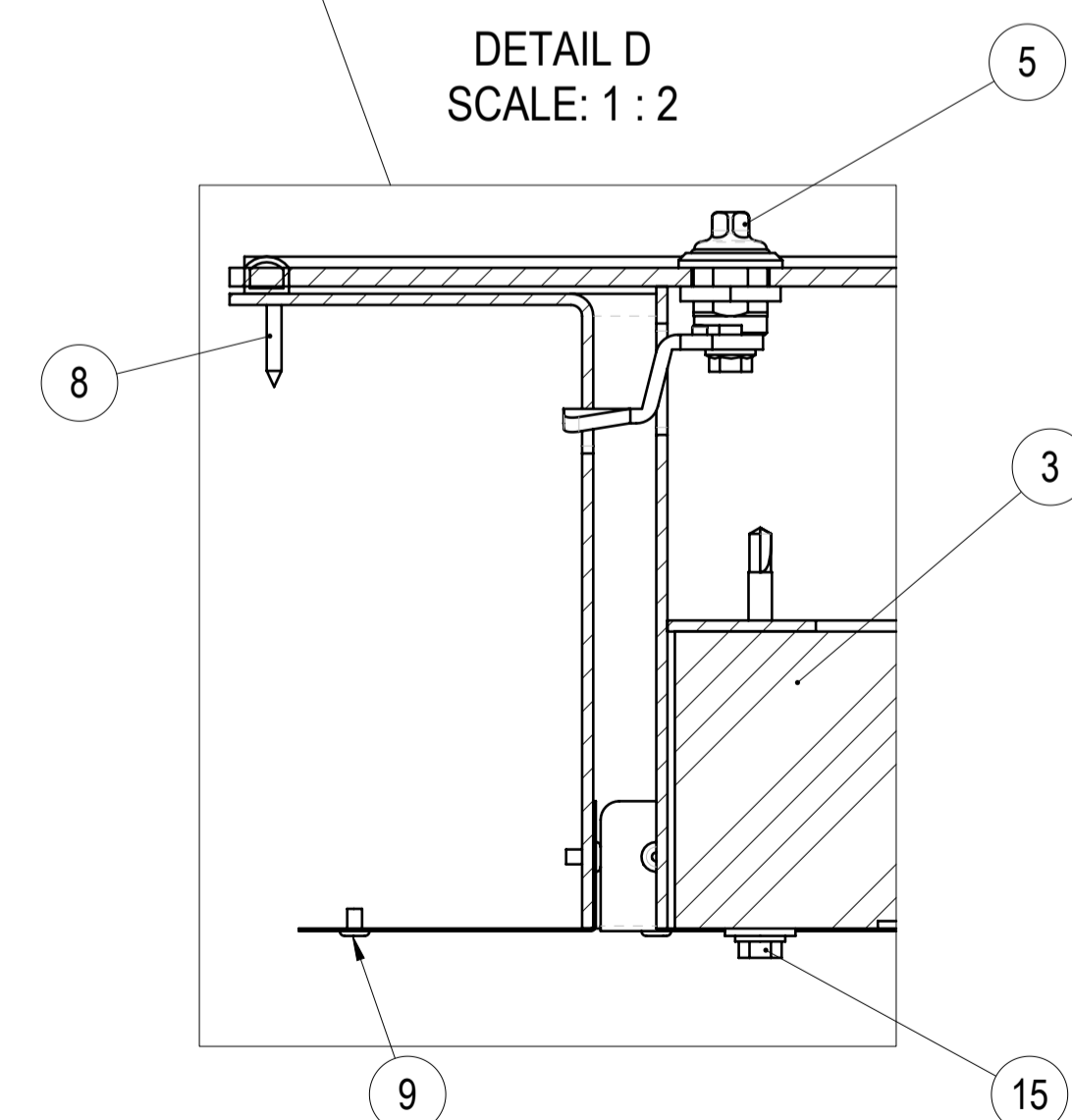
SECTION A-A



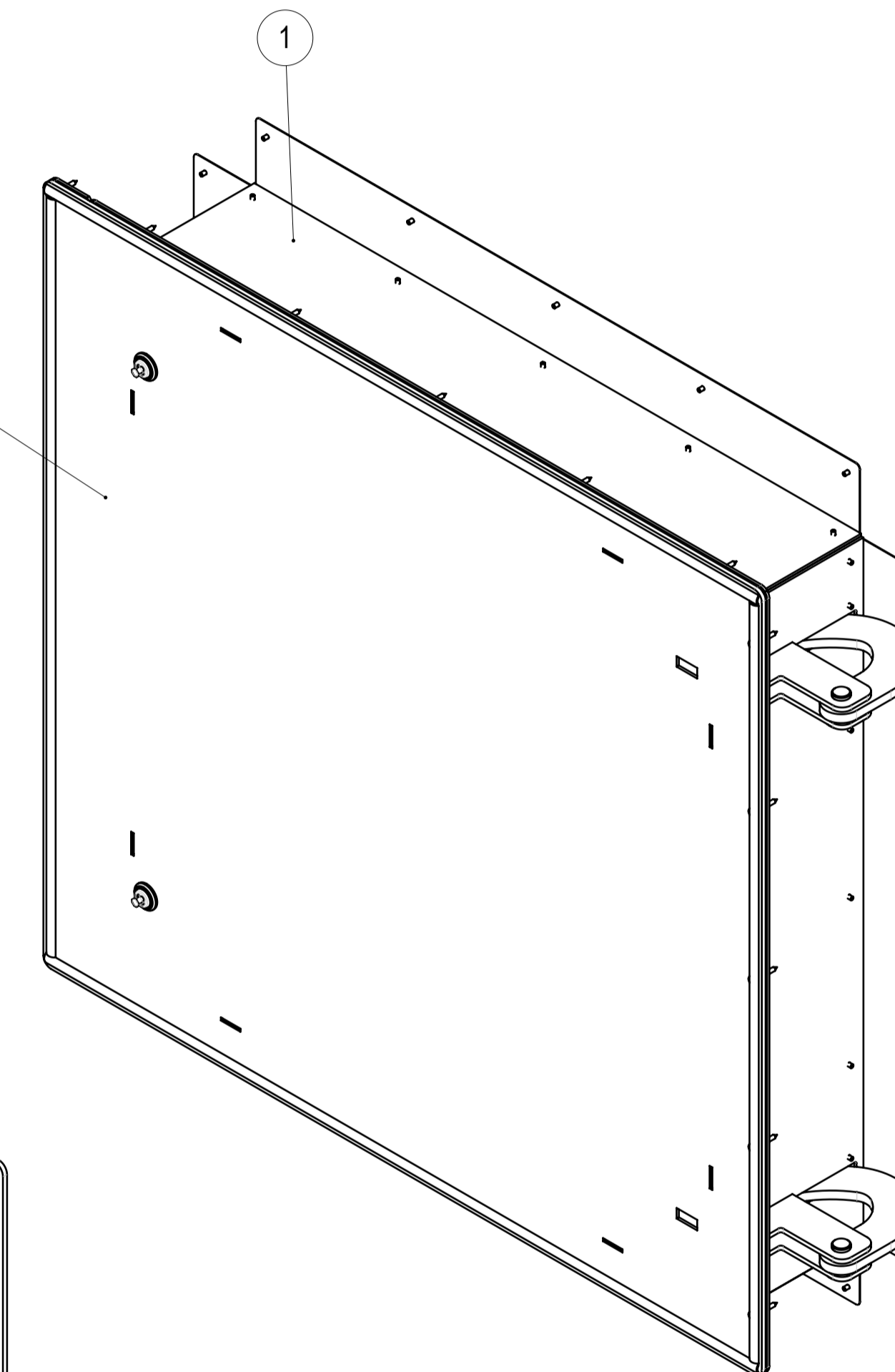
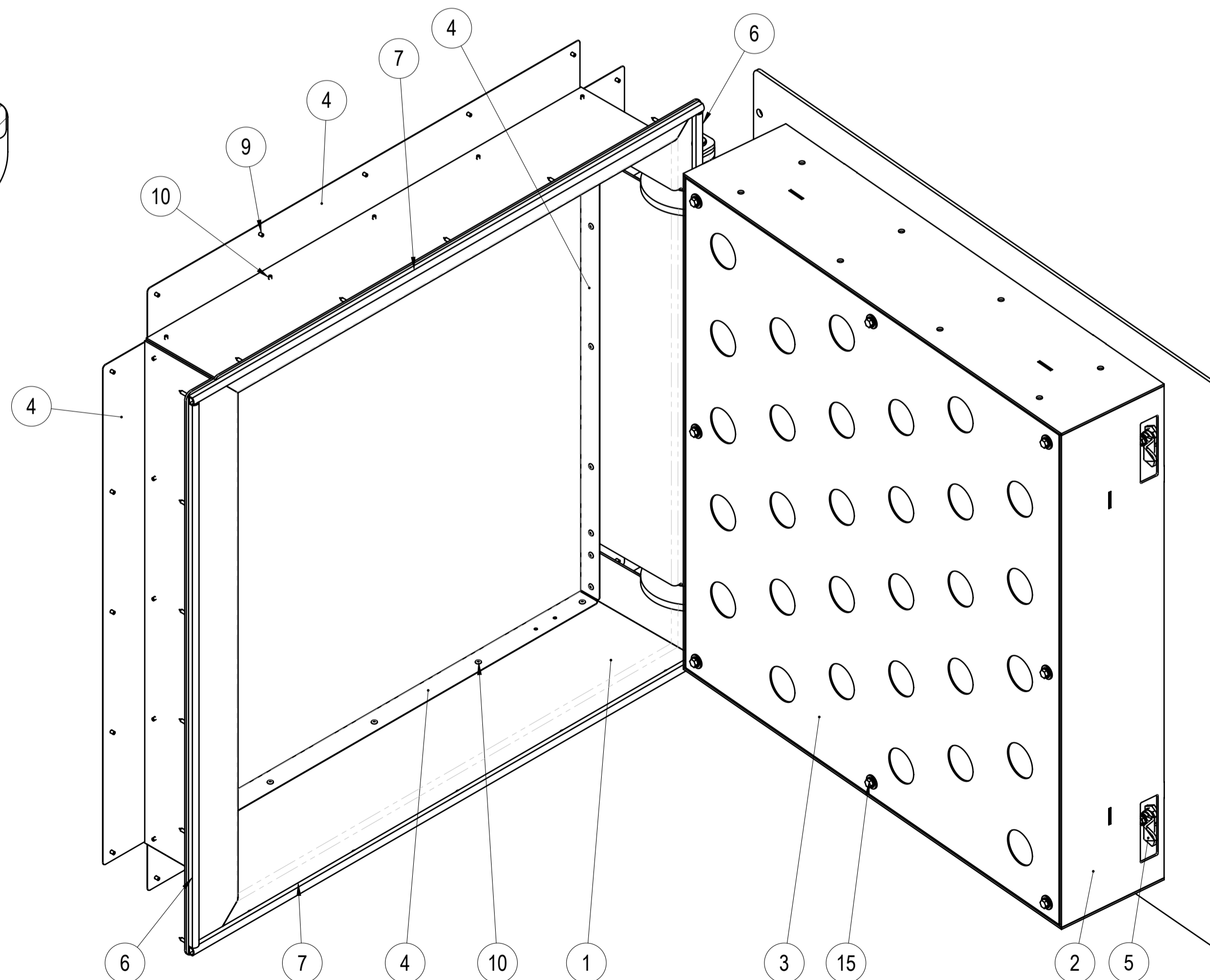
DETAIL C
SCALE: 1 : 2



SECTION B-B



DETAIL D
SCALE: 1 : 2



Panel Flashings (Pos 4) must be fastened ONLY during installation on site!

NO.	PART NO	DESCRIPTION	MATERIAL	PROCESSING	REVISION	WEIGHT	QTY
1	105-30211-00	Hatch frame assembly	-	WLD PNT		17.99	1
2	105-30212-00	Sandwich cover panel	-	WLD		50.00	1
3	105-30210-01	Sandwich panel	Kingspan KS1150 AF 80mm	CND		7.61	1
4	105-30210-02	Panel Flashing	DX51D+Z275	LCB		0.49	4
5	Elesa Garter GN 115-AV8-38-NI	Latche with four external flats	-	COTS		0.12	2
6	Fixoprofile 5887788 L=858	Foam rubber half-round profile 10x12mm	Micro pore rubber	COTS		0.04	2
7	Fixoprofile 5887788 L=932	Foam rubber half-round profile 10x12mm	Micro pore rubber	COTS		0.05	2
8	CSK WUPOFAST Wood screw 64x25	CSK WUPOFAST wood screw	EZn	COTS		0.00	21
9	ISO-15979-4x6 (1.0-3.0)	Standard rivet, dome head	St/St	COTS		0.00	20
10	ISO-15979-4x8 (3.0-5.0)	Standard rivet, dome head	St/St	COTS		0.00	24
11	ISO1234 (DIN94) 3.2 x 20	Split pin	EZn	COTS		0.00	2
12	ISO2341-B 10 x 35	Clevis pin with head	EZn	COTS		0.03	2
13	ISO7089 (DIN125) M10	Plain Washer	HDG-HV200	COTS		0.00	4
14	ISO7093 (DIN9021) M10	Large plain washer	HDG-HV200	COTS		0.01	2
15	-DIN 7504K ST6.3x110	Sandwich element screw	EZn	COTS		0.03	8

		MATERIAL SURFACE PROTECTION MACHINING	WEIGHT 78.440 Kg	DEBURR AND BREAK SHARP EDGES DO NOT SCALE DRAWING	REVISION THERMAL CUTTING WELDING	DATE 12.05.2025
Designed by D. Dislers	Signature	PART NO. 105-30210-00	SCALE 1:5	ISO 9013 441	ISO 13920 BF	FORMAT A1
Drawn by E. Kriviss	Signature	DESCRIPTION Access hatch with lining	SHEET 1/1			